

### General Instructions

Inspect the reactors immediately upon receipt for evidence of damage or mishandling. If necessary, a claim should be filed with the carrier immediately and the manufacturer should be notified.

### Consignes générales

Faire l'inspection des réacteurs dès leur réception afin de déceler toute trace d'endommagement ou d'erreur d'acheminement. Le cas échéant, faire immédiatement une réclamation auprès du transporteur et en avvertir le fabricant.

### Instrucciones generales

Revise los reactores inmediatamente después de su recepción para detectar daños o manipulación indebida. Si fuera necesario, se debe presentar una queja con el transportista de inmediato y se debe notificar al fabricante.



### Warning

These abbreviated instructions should be used in conjunction with all applicable standards covering the installation, use and maintenance of this reactor. For more details please refer to the user manual IOMGCR.

### Avertissement

Ces consignes abrégées devraient être utilisées conjointement à toutes les normes relatives à l'installation, l'utilisation et l'entretien de ce réacteur. Pour plus de détails, se référer au manuel de l'utilisateur IOMGCR.

### Advertencia

Estas instrucciones resumidas deben ser usadas en conjunto con las normas aplicables a la instalación, el uso y el mantenimiento de este reactor; para más detalles, consulte el manual de usuario IOMGCR.



### Danger

#### Hazard of electric shock, explosion, or arc flash

- This equipment must only be installed and serviced by qualified electrical personnel.
- Apply appropriate personal protective equipment (PPE) and follow safe electrical work practices. See NFPA 70E.
- Turn off all power supplying this equipment before working on or inside equipment.
- Always use a properly rated voltage sensing device to confirm power is off.
- Replace all devices, doors, and covers before turning on power to this equipment.

### Danger

#### Risque de choc électrique, d'explosion ou d'arc électrique

- Cet équipement doit être installé et entretenu uniquement par des électriciens qualifiés.
- Utiliser l'équipement de protection personnelle (EPP) approprié et respecter les pratiques sécuritaires de travail électrique. Voir NFPA 70E.
- Éteindre toutes les sources d'alimentation électrique de cet équipement avant de travailler sur ou à l'intérieur de l'équipement.
- Toujours utiliser un appareil de détection de tension dûment qualifié afin de confirmer qu'il n'y a pas de tension.
- Replacer tous les accessoires, portes ou couvercles avant de mettre sous tension cet équipement.

### Peligro

#### Riesgo de descarga eléctrica, explosión o arco eléctrico

- La instalación y el mantenimiento de este equipo deberán ser realizados solamente por personal de equipos eléctricos calificado.
- Utilice el equipo de protección personal (EPP) apropiado y siga las prácticas de seguridad relacionadas con los equipos eléctricos. Consulte NFPA 70E.
- Apague todo el suministro eléctrico antes de trabajar dentro o fuera de este equipo.
- Utilice siempre un dispositivo detector de tensión de la capacidad adecuada para confirmar que la electricidad esté apagada.
- Reemplace todos los dispositivos, puertas y cubiertas antes de encender el equipo.



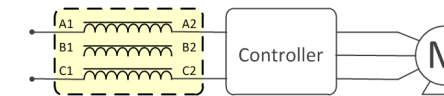
FAILURE TO FOLLOW THESE INSTRUCTIONS CAN RESULT IN DEATH OR SEVERE PERSONAL INJURY.

NE PAS SUIVRE CES INSTRUCTIONS PEUT ENTRAÎNER LA MORT OU DE GRAVES BLESSURES PERSONNELLES.

EL INCUMPLIMIENTO DE ESTAS INSTRUCCIONES PUEDE OCASIONAR LESIONES PERSONALES GRAVES O LA MUERTE.

### Wiring Diagram

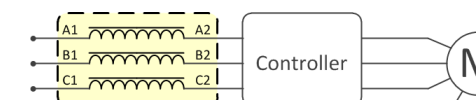
#### SINGLE PHASE APPLICATION (derated as per chart in IOMGCR)



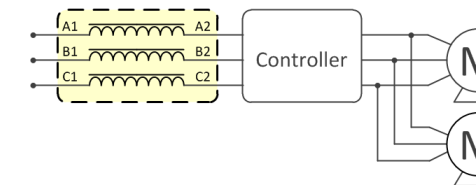
#### THREE PHASE

##### INPUT SIDE

(a) single motor



(b) multiple motors

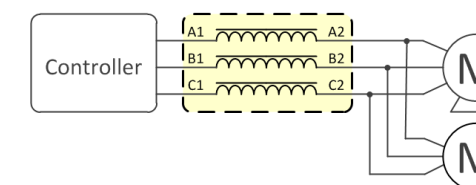


##### OUTPUT SIDE

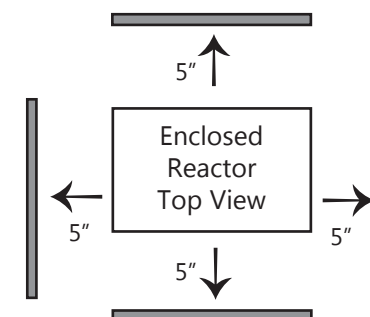
(a) single motor



(b) multiple motors



### Clearance



The ventilation clearance on reactors must have a minimum of 5" clearance from all surfaces such as walls and other equipment. Consult NEC and local codes.

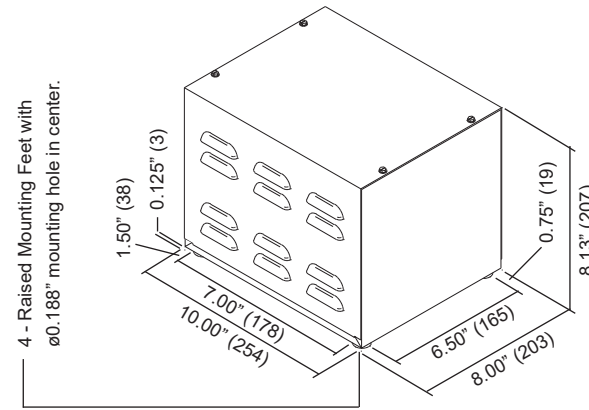
| Enclosed Part Number | Enclosure Style | Enclosure Part Number | Enclosure Style | Enclosure Part Number | Enclosure Style | Enclosure Part Number | Enclosure Style |
|----------------------|-----------------|-----------------------|-----------------|-----------------------|-----------------|-----------------------|-----------------|
| CRX0114DE            | CH2             | CRX0477BE             | CH6             | CRX01D1BE             | N1              | CRX0027DE             | N2              |
| CRX0124AE            | CH2             | CRX0515AE             | CH6             | CRX01D4AE             | N1              | CRX0032BE             | N2              |
| CRX0125BE            | CH2             | CRX0515BE             | CH6             | CRX01D4BE             | N1              | CRX0034BE             | N2              |
| CRX0144AE            | CH2             | CRX0590BE             | CH6             | CRX01D6AE             | N1              | CRX0035CE             | N2              |
| CRX0156BE            | CH2             | CRX0720AE             | CH6             | CRX01D6BE             | N1              | CRX0040BE             | N2              |
| CRX0180AE            | CH2             | CRX0840AE             | CH6             | CRX01D8AE             | N1              | CRX0041BE             | N2              |
| CRX0180BE            | CH2             | CRX0960AE             | CH6             | CRX01D8BE             | N1              | CRX0045CE             | N2              |
| CRX0192AE            | CH2             | CRX1080AE             | CH6             | CRX02D1AE             | N1              | CRX0046DE             | N2              |
| CRX0192BE            | CH2             | CRX1200AE             | CH6             | CRX02D1BE             | N1              | CRX0052AE             | N2              |
| CRX0200CE            | CH2             | CRX0001AE             | N1              | CRX02D4AE             | N1              | CRX0052BE             | N2              |
| CRX0211CE            | CH2             | CRX0001BE             | N1              | CRX02D4BE             | N1              | CRX0052CE             | N2              |
| CRX0211DE            | CH2             | CRX0002CE             | N1              | CRX02D4CE             | N1              | CRX0052DE             | N2              |
| CRX0240AE            | CH2             | CRX0003AE             | N1              | CRX02D4DE             | N1              | CRX0059BE             | N2              |
| CRX0242AE            | CH2             | CRX0003BE             | N1              | CRX02D6AE             | N1              | CRX0059CE             | N2              |
| CRX0273AE            | CH2             | CRX0004CE             | N1              | CRX02D6BE             | N1              | CRX0059DE             | N2              |
| CRX0273BE            | CH2             | CRX0008CE             | N1              | CRX02D7AE             | N1              | CRX0062AE             | N2              |
| CRX0144BE            | CH4             | CRX0009AE             | N1              | CRX02D7BE             | N1              | CRX0062BE             | N2              |
| CRX0240BE            | CH4             | CRX0009BE             | N1              | CRX03D4AE             | N1              | CRX0065AE             | N2              |
| CRX0242BE            | CH4             | CRX0011AE             | N1              | CRX03D4BE             | N1              | CRX0065BE             | N2              |
| CRX0273CE            | CH4             | CRX0011BE             | N1              | CRX03D5AE             | N1              | CRX0075AE             | N2              |
| CRX0273DE            | CH4             | CRX0011CE             | N1              | CRX03D5BE             | N1              | CRX0075BE             | N2              |
| CRX0289AE            | CH4             | CRX0011DE             | N1              | CRX03D5CE             | N1              | CRX0075CE             | N2              |
| CRX0289BE            | CH4             | CRX0012CE             | N1              | CRX03D5DE             | N1              | CRX0075DE             | N2              |
| CRX0302AE            | CH4             | CRX0014AE             | N1              | CRX03D9AE             | N1              | CRX0077AE             | N2              |
| CRX0302BE            | CH4             | CRX0014BE             | N1              | CRX03D9BE             | N1              | CRX0077BE             | N2              |
| CRX0336AE            | CH4             | CRX0017AE             | N1              | CRX04D6AE             | N1              | CRX0077CE             | N2              |
| CRX0336BE            | CH4             | CRX0017BE             | N1              | CRX04D6BE             | N1              | CRX0077DE             | N2              |
| CRX0343AE            | CH4             | CRX0021AE             | N1              | CRX04D6CE             | N1              | CRX0088AE             | N2              |
| CRX0343BE            | CH4             | CRX0021BE             | N1              | CRX04D6DE             | N1              | CRX0088BE             | N2              |
| CRX0343CE            | CH4             | CRX0022AE             | N1              | CRX04D8AE             | N1              | CRX0088CE             | N2              |
| CRX0343DE            | CH4             | CRX0022BE             | N1              | CRX04D8BE             | N1              | CRX0088DE             | N2              |
| CRX0361AE            | CH4             | CRX0024AE             | N1              | CRX06D1AE             | N1              | CRX0096AE             | N2              |
| CRX0396AE            | CH4             | CRX0024BE             | N1              | CRX06D1BE             | N1              | CRX0096BE             | N2              |
| CRX0396BE            | CH4             | CRX0024CE             | N1              | CRX06D6AE             | N1              | CRX0099AE             | N2              |
| CRX0396CE            | CH4             | CRX0024DE             | N1              | CRX06D6BE             | N1              | CRX0099BE             | N2              |
| CRX0396DE            | CH4             | CRX0027AE             | N1              | CRX06D6CE             | N1              | CRX0114AE             | N2              |
| CRX0361BE            | CH5             | CRX0027BE             | N1              | CRX06D6DE             | N1              | CRX0114BE             | N2              |
| CRX0382AE            | CH5             | CRX0027CE             | N1              | CRX07D5AE             | N1              | CRX0114CE             | N2              |
| CRX0382BE            | CH5             | CRX0031AE             | N1              | CRX07D5BE             | N1              | CRX0124BE             | N2              |
| CRX0412AE            | CH5             | CRX0031BE             | N1              | CRX07D5CE             | N1              | CRX0125AE             | N2              |
| CRX0412BE            | CH5             | CRX0031CE             | N1              | CRX07D5DE             | N1              | CRX0143AE             | N2              |
| CRX0414AE            | CH5             | CRX0031DE             | N1              | CRX07D6AE             | N1              | CRX0143BE             | N2              |
| CRX0414BE            | CH5             | CRX0032AE             | N1              | CRX07D6BE             | N1              | CRX0143CE             | N2              |
| CRX0472AE            | CH5             | CRX0034AE             | N1              | CRX10D7AE             | N1              | CRX0143DE             | N2              |
| CRX0472BE            | CH5             | CRX0040AE             | N1              | CRX10D7BE             | N1              | CRX0156AE             | N2              |
| CRX0528AE            | CH5             | CRX0041AE             | N1              | CRX10D7CE             | N1              | CRX0170AE             | N2              |
| CRX0528BE            | CH5             | CRX0046AE             | N1              | CRX10D7DE             | N1              | CRX0170BE             | N2              |
| CRX0528CE            | CH5             | CRX0046BE             | N1              | CRX16D7AE             | N1              | CRX0170CE             | N2              |
| CRX0528DE            | CH5             | CRX0046CE             | N1              | CRX16D7BE             | N1              | CRX0170DE             | N2              |
| CRX0590AE            | CH5             | CRX0059AE             | N1              | CRX16D7CE             | N1              | CRX0211AE             | N2              |
| CRX0477AE            | CH6             | CRX01D1AE             | N1              | CRX16D7DE             | N1              | CRX0211BE             | N2              |

### Enclosure Dimensions (N1, N2)

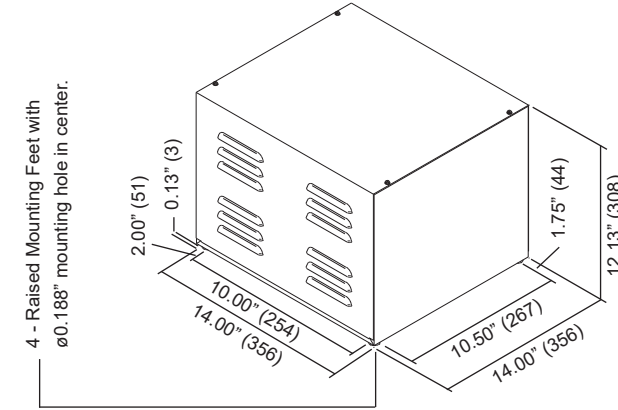
| Enclosure Style | Height         | Width       | Depth       | MTG Width   | MTG Depth     | MTG slot/hole size |
|-----------------|----------------|-------------|-------------|-------------|---------------|--------------------|
| N1              | 8.13 [206.51]  | 10 [254.00] | 8 [203.20]  | 7 [177.80]  | 6.5 [165.10]  | 0.19 [4.78]        |
| N2              | 12.13 [308.11] | 14 [355.60] | 14 [355.60] | 10 [254.00] | 10.5 [266.70] | 0.19 [4.78]        |

Inches [mm]

### N1 Series Enclosure



### N2 Series Enclosure

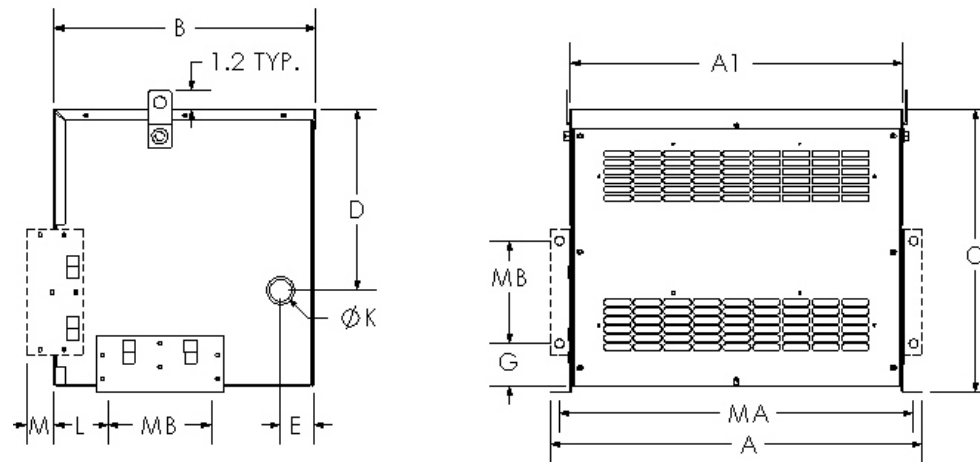


### Enclosure Dimensions (CH2, CH4, CH5, CH6)

| Enclosure Style | A             | B             | A1            | C             | D             | E           | G            | H             | K                           | L            | M           | MA            | MB           |
|-----------------|---------------|---------------|---------------|---------------|---------------|-------------|--------------|---------------|-----------------------------|--------------|-------------|---------------|--------------|
| CH2             | 23.5 [596.90] | 16.5 [419.10] | 21.0 [533.4]  | 17.9 [454.66] | 11.4 [289.56] | 2.1 [53.34] | 3.4 [86.36]  | -             | 1.38 X 1.75 [35.05 X 44.45] | 3.4 [86.36]  | 1.8 [45.72] | 22.4 [568.96] | 6.5 [165.10] |
| CH4             | 26.1 [662.94] | 20.5 [520.70] | 23.6 [599.44] | 25.9 [657.86] | 19.4 [492.76] | 2.3 [58.42] | 6.3 [160.02] | -             | 2.00 X 3.00 [50.80 X 76.20] | 4.0 [101.60] | 1.8 [45.72] | 25.0 [635.10] | 6.5 [165.10] |
| CH5             | 28.1 [713.74] | 21.3 [541.02] | 25.6 [650.24] | 28.9 [734.06] | 22.4 [568.96] | 2.3 [58.42] | -            | 12.4 [314.96] | 2.00 X 3.00 [50.80 X 76.20] | 5.0 [127.00] | -           | 27.0 [685.80] | 6.5 [165.10] |
| CH6             | 33.5 [850.90] | 23.0 [584.20] | 31.1 [789.94] | 31.2 [792.48] | 24.0 [609.60] | 3.7 [93.98] | -            | 14.0 [355.60] | 2.00 X 3.00 [50.80 X 76.20] | 4.0 [101.60] | -           | 32.5 [825.50] | 9.0 [228.60] |

Inches [mm]

### CH2, CH4, CH5 Series Enclosure

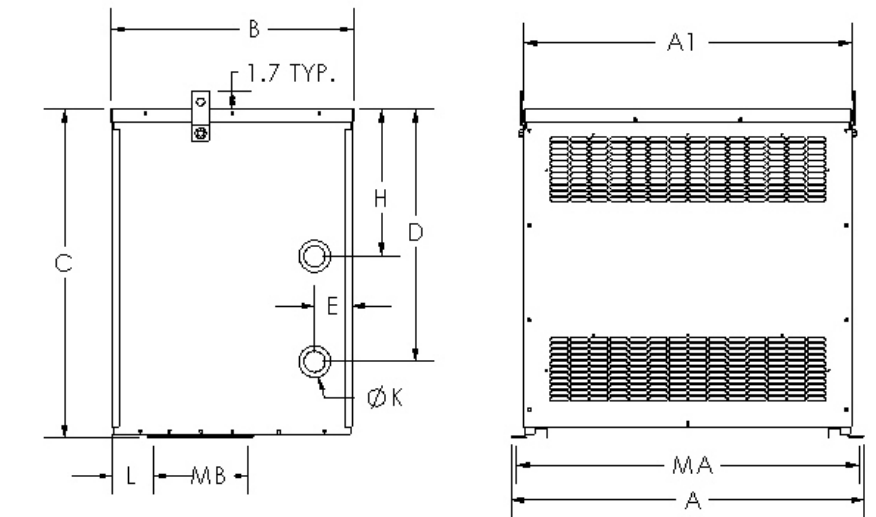


\* CH1 THROUGH CH4 INCLUDE PROVISION FOR WALL MOUNTING

Side View

Front View

### CH6 Series Enclosure



Side View

Front View

### Terminal Information

| Terminal       | Amps           | Suitable for    | Maximum tightening torque |
|----------------|----------------|-----------------|---------------------------|
| Terminal Block | <=9            | 18-14 AWG       | 5 in-lbs                  |
|                | >9 and <=27    | 13-10 AWG       | 11 in-lbs                 |
| Terminal Block | >27            | 14-4 AWG        | 20 in-lbs                 |
|                | 27-30          | 8 AWG           | 25 in-lbs                 |
| Terminal Pad   | <=110          | 14-10 AWG       | 10 ft-lbs                 |
|                | >110           | 3/8 in hardware | 28 ft-lbs                 |
| Terminal Pad   | <=472          | 1/4 in hardware | 10 ft-lbs                 |
|                | >472           | 3/8 in hardware | 28 ft-lbs                 |
| Terminal Pad   | <=840          | 1/2 in hardware | 70 ft-lbs                 |
|                | >840 and <1200 | 1/2 in hardware | 70 ft-lbs                 |

Wire sizes are guidelines only. Please consult your local electrical code.